



REFRIGERATION TEMPERATURE CONTROL

Provide Positive Control of Refrigeration Applications Where Remote Control is Desired

FEATURES

- Hydraulic action element.
- Dustproof steel case with top and bottom knockouts.
- Temperature dial graduated in °F and °C and can be adjusted through cover.
- High electrical ratings allow operation of most equipment without use of relays or motor starters.
- Type 1609-90 and 1609-114 — For use in zoning systems where all thermostats control a common compressor & a separate solenoid refrigerant valve in each zone.

SPECIFICATIONS

| | |
|---------------|---|
| Dimensions | 5 ³ / ₈ " H + 2 ⁵ / ₁₆ " W x 2 ⁹ / ₁₆ " D |
| Finish | Grey |
| Bulb Mounting | Clamp included with all models except 1609-90 and 1609-114 |
| Agency | U.L. listed and C.S.A. certified |



1609-101

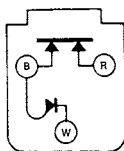
PARTS AND ACCESSORIES

- F89-0027 Refrigeration Well
- F55-0088 Packing Nut

| Model Number | Range | Differential | Capillary Length | Bulb Size | Switch Action | Full Electrical Rating | Motor Rating (Full Load) | |
|---------------|--------------------------------|-----------------------------------|------------------|---|---------------|------------------------|--------------------------|---------|
| | | | | | | | 120 VAC | 240 VAC |
| 241-2 | +20 to +90°F (-6 to +32°C) | Adj. 3 to 20°F (2 to 11°C) | 8 ft. | 6 ³ / ₄ " x 3 ¹ / ₈ " | Close on Rise | see page 162 | 16.0A | 8.0A |
| 1609-90 | -20 to +50°F (-29 to +10°C) | Adj. 3 to 25°F (2 to 14°C) | 8 ft. | 5 ¹ / ₄ " x 3 ¹ / ₈ " | Close on Rise | HH2C see page 162 | 7.4A | 3.7A |
| 1609-100 | -50 to +50°F (-45 to +10°C) | Adj. 4 to 35°F (2 to 19°C) | 10 ft. | 6 ³ / ₈ " x 3 ¹ / ₈ " | Close on Rise | FGH see page 162 | 16.0A | 8.0A |
| 1609-101 | -30 to +90°F (-34 to +32°C) | Adj. 3.5 to 40°F (2 to 22°C) | 5 ft. | 5 ¹ / ₄ " x 3 ¹ / ₈ " | Close on Rise | FGH see page 162 | 16.0A | 8.0A |
| 1609-102 | -30 to +90°F (-34 to +32°C) | Adj. 3.5 to 40°F (2 to 22°C) | 8 ft. | 5 ¹ / ₄ " x 3 ¹ / ₈ " | Close on Rise | FGH see page 162 | 16.0A | 8.0A |
| 1609-103 | -30 to +90°F (-34 to +32°C) | Adj. 3.5 to 40°F (2 to 22°C) | 10 ft. | 5 ¹ / ₄ " x 3 ¹ / ₈ " | Close on Rise | FGH see page 162 | 16.0A | 8.0A |
| 1609-104 | -30 to +90°F (-34 to +32°C) | Adj. 3.5 to 40°F (2 to 22°C) | 20 ft. | 5 ¹ / ₄ " x 3 ¹ / ₈ " | Close on Rise | FGH see page 162 | 16.0A | 8.0A |
| 1609-105 ② | -30 to +90°F (-34 to +32°C) | Adj. 3.5 to 40°F (2 to 22°C) | 5 ft. | 5 ¹ / ₄ " x 3 ¹ / ₈ " | Close on Rise | FGH see page 162 | 16.0A | 8.0A |
| 1609-114 ① | +20 to +90°F (-6 to +32°C) | Adj. 3 to 25°F (2 to 14°C) | 8 ft. | 5 ¹ / ₄ " x 3 ¹ / ₈ " | Close on Rise | HH2C see page 162 | 7.4A | 3.7A |
| 1687-9 | -30 to +90°F (-34 to +32°C) | Adj. 4.5 to 40°F (2.5 to 22°C) | 8 ft. | 5 ¹ / ₄ " x 3 ¹ / ₈ " | SPDT | SPDT see page 162 | 7.4A | 3.7A |
| 1605-64 | +33 to +55°F (+1 to +13°C) | Adj. 1 to 4°F (1 to 2°C) | 40" | 7 ¹ / ₄ " x 3 ¹ / ₈ " | Close on Rise | HH2C see page 162 | 7.4A | 3.7A |

① Element protected to 200°F (93°C)

② Knob adjustment

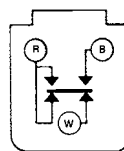


HH2C Contact Structure

HH2C Rated Controls

Switch Action

Double pole, single throw.
B terminal is common.
B-R and B-W contacts both close on a rise of temperature.



SPDT Contact Structure

SPDT Rated Controls

Switch Action

R-B Open on Rise
R-W Close on Rise

✻ Indicates Canadian Model Number: call 1-905-201-4653 to order