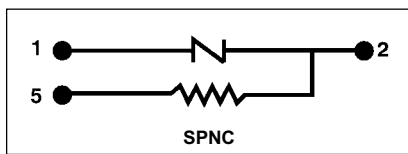


- TH – Cooling Thermostat
- ⊙ – Compressor Contactor Coil
- O.L. – Motor Overload Protector Contacts
- L.C. – Limit Control Contacts
- ⊗ – Lock-Out Relay Coil
- R1 – Lock-Out Relay Normally Closed Contacts



90-109 AND 90-110 RBM TYPE 129000

A “Lock-Out” Relay is used in Some Air Conditioning Systems to Provide Manual Reset Protection with Automatic Reset Overloads, High or Low Pressure Cut-Out Controls, etc.

SPECIFICATIONS

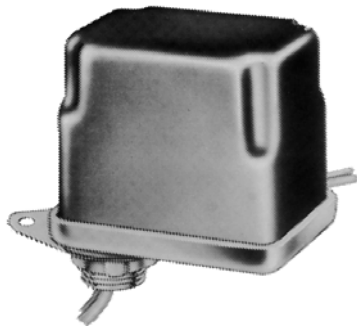
- Temperature Range –40°F to 130°F
- Mechanical Life (no load) 500,000 operations, 60 operations/min.
- Electrical Life (rated load) 100,000 operations, 6 operations/min.
- Weight (approximate) 6.5 oz
- Agency U.L. file number E12139
C.S.A. file number LR13360
- Coils, Frequency 50/60 Hz
- Coils, Insulation Class B
- Coils, Operate 85% of nominal coil voltage;
110% maximum safe operate
- Coils, Duty Cycle Continuous

CAUTION: Lock-out relays have special coils and settings. Do not substitute similar type relays even though they have same coil voltage.

Model Number	Contacts		Coil Voltage (60 Hz)	COIL DATA			
	Form	Rating		DC Res.	MA	Nom. VA	Inrush VA
90-109	SPNC	Pilot	24	45.7	167	4	8
90-110	SPNC	Pilot	208/230	3316	17	4	8

RELAYS and TRANSFORMERS

90-123



Approximate Overall Dimensions
2^{45/64}" x 2^{38/64}" x 3^{6/64}"

**90-123 THRU 90-125 RBM TYPE 129000AR
ADD-A-RELAY ENCLOSED SWITCHING**

Base with a Bushing, Locknuts and Position Locking Plate to Mount this Relay in Standard Electric Box with 1/2" “Knock Out”. Relay has Double Break Silver Alloy Contacts and is Completely Enclosed. Operates in Any Position

SPECIFICATIONS

- Temperature Range –40°F to 130°F
- Mechanical Life (no load) 500,000 operations, 60 operations/min.
- Electrical Life (rated load) 100,000 operations, 6 operations/min.
- Outline Drawings See page 195
- Weight (approximate) 6.5 oz
- Agency U.L. file number E12139
C.S.A. file number LR13360
- Coils, Frequency 50/60 Hz
- Coils, Insulation Class B
- Coils, Operate 85% of nominal coil voltage;
110% maximum safe operate
- Coils, Duty Cycle Continuous

CONTACT RATING – 250 VAC MAX

INDUCTIVE	RESISTIVE
18 Amp Continuous	18 Amp Continuous
1 HP – 120 V	
1½ HP – 250 V	

Model Number	Coil Voltage (60 Hz.)	Coil Data			
		DC Res.	MA	Nom. VA	Inrush VA
90-123	24	45.7	167	4	8
90-124	120	761	33	4	8
90-125	208/230	3316	17	4	8

CROSS REFERENCE—OLD TO NEW

OLD Model Number	NEW Model Number
90-120	90-123
90-121	90-124
90-122	90-125

